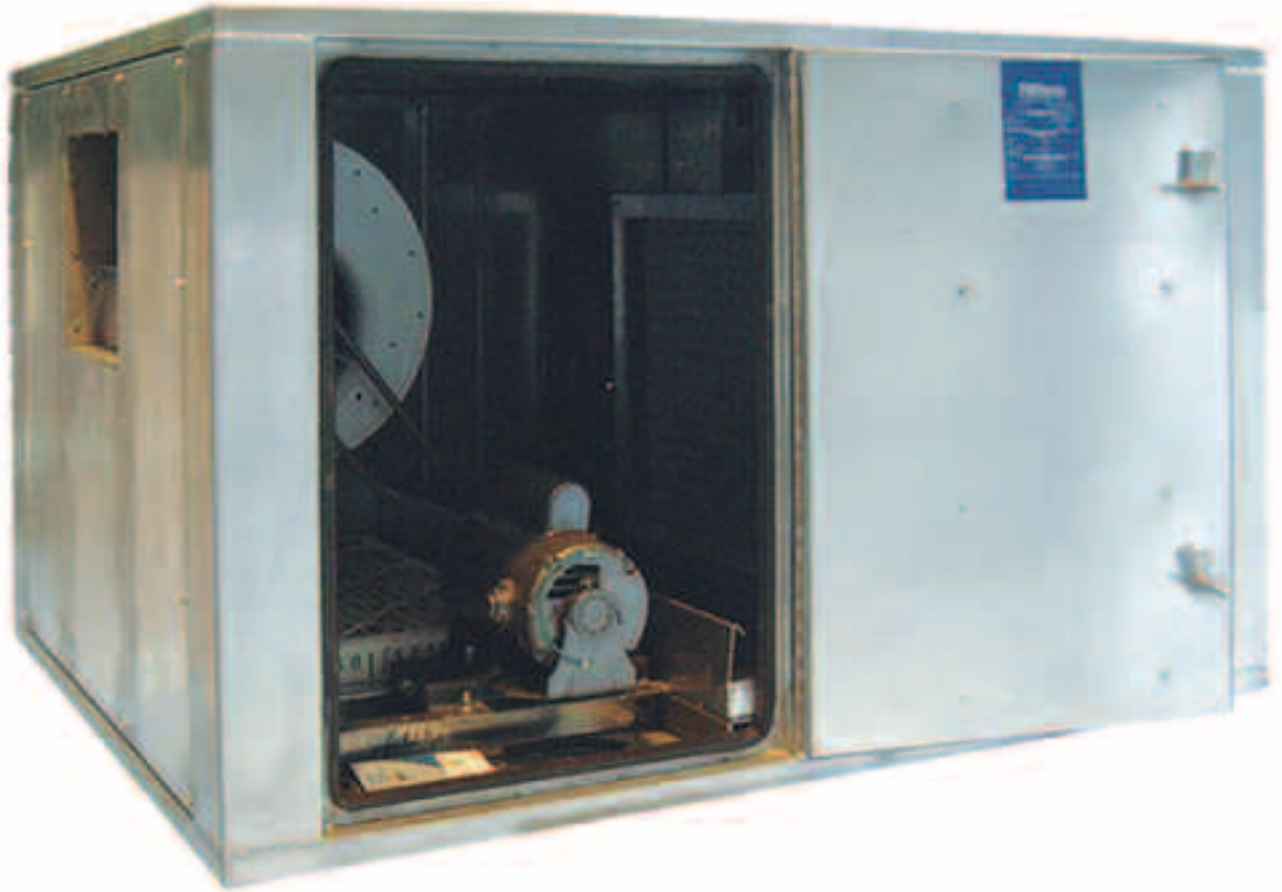


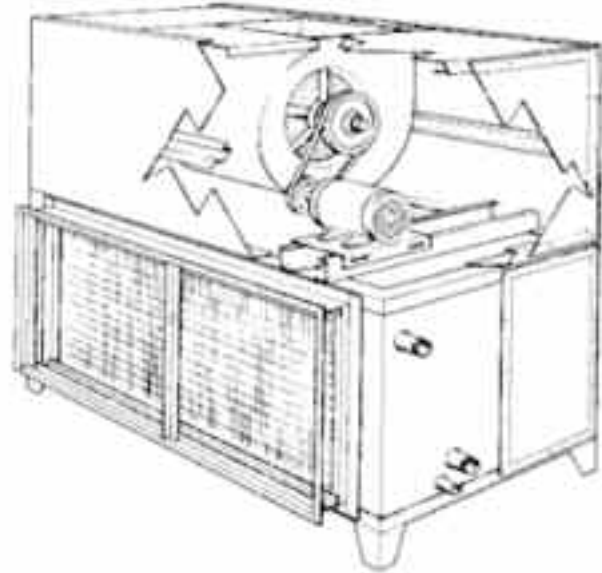
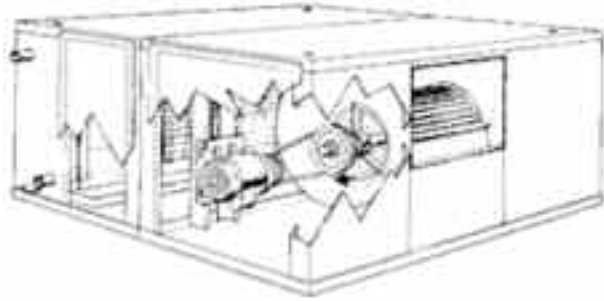
THERMAL **CORPORATION**

A Division of Nailor International Inc.



**MODEL CPE:
ECONOMY AIR HANDLERS**

Thermal Model CPE Standard Specification



Description

Model CPE air handlers are designed for efficient and economical heating and cooling of retail, commercial and institutional spaces.

Configuration

Model CPE units include filters, coils with drain pans and fans, and are available as both horizontal units for floor and suspended mounting, and as vertical units for floor mounting.

Cabinet

Cabinets are fabricated from die-formed, welded galvanized steel and feature removable side panels and 1", 1-1/2" pcf NFPA-coated glass fiber insulation. Cabinets are designed for working pressures up to 3" w.g.

Fans and Drives

Fans are centrifugal, forward curved DIDW type. Solid cold rolled steel shafts are mounted in self-aligning, permanently lubricated ball bearings. Fan drives are variable pitch "V" belt type which allow the air flow rate to be balanced to actual system conditions.

Motors

Fan motors are open drip proof type, internally mounted on an adjustable base. Both three phase and single phase motors are available. Motors 1 HP and smaller are available with resilient base.

Coils

Constructed of 1/2" OD seamless copper tubing with aluminum or copper plate type fins at 12 per inch. Supply, return or suction headers are fabricated of copper. Water coils have MPT connections with manual drain and air vents, direct expansion coils have OD sweat connections. Supply and return water coil and direct expansion suction connections are extended thru unit casing.

Coils Arrangement

CPE units are designed to accept 8 rows of cooling coil maximum or 6 row cooling with 2 row heating downstream from cooling coil. Standard connections are always right hand when facing unit in direction of air flow.

Drain Pan

Moisture removed from cooling coils is collected in an internally mounted drain pan fabricated of galvanized steel insulated and internally coated with Seal Kote mastic. Drain connection is 7/8" OD sweat extended thru unit casing.

Filters

Standard filters are 2" throwaway type, removable via a hinged door on one side of the unit.

Options

A variety of popular options are available:

- Stainless steel and aluminum cabinets
- Solid and perforated galvanized steel, stainless steel and aluminum liners
- Epoxy paint
- Aluminum fan housings and wheels
- Stainless steel drain pans and coil casings
- Pillow block bearings with grease fittings
- Extended lube lines
- Variable coil fin spacing
- TEFC and explosion proof motors
- Motor controls: disconnects, starters and variable speed drives

Fan Performance Table

Unit Model	CFM	FAN O.V. FPM	Face Velocity		Total Static Pressure													
			Coil FPM	Filter FPM	.50		.75		1.00		1.25		1.50		1.75		2.00	
					RPM	BHP	RPM	BHP	RPM	BHP	RPM	BHP	RPM	BHP	RPM	BHP	RPM	BHP
CPE 80	600	1240	355	216	786	.104	946	.148	1091	.198	—	—	—	—	—	—	—	—
	700	1446	414	252	810	.132	957	.180	1093	.231	1220	.288	—	—	—	—	—	—
	800	1653	473	288	842	.167	977	.217	1103	.272	1223	.331	1336	.394	—	—	—	—
	900	1860	533	324	880	.210	1004	.264	1122	.321	1234	.383	1342	.449	1444	.519	—	—
CPE 100	800	1653	394	288	842	.167	977	.217	1103	.272	1223	.331	1336	.394	—	—	—	—
	900	1860	443	324	880	.210	1004	.264	1122	.321	1234	.383	1342	.449	1444	.519	—	—
	1000	2066	493	360	922	.263	1038	.319	1148	.380	1253	.445	1354	.513	1452	.586	1546	.662
	1100	2273	542	396	968	.324	1076	.385	1179	.449	1278	.517	1374	.588	1466	.664	1556	.741
CPE 150	1250	1923	413	282	875	.282	1009	.353	1132	.425	1247	.501	1357	.580	1463	.664	—	—
	1350	2077	446	304	901	.332	1030	.406	1148	.483	1259	.563	1365	.645	1466	.731	1564	.820
	1500	2308	495	338	945	.418	1064	.500	1177	.584	1283	.669	1383	.757	1479	.847	1571	.941
	1650	2538	545	372	994	.520	1102	.607	1209	.698	1310	.791	1406	.885	1497	.981	1585	1.08
CPE 200	1600	1914	399	288	888	.352	1021	.440	1145	.534	1263	.634	1376	.739	1483	.848	1586	.964
	1800	2153	449	324	934	.452	1055	.547	1171	.648	1282	.754	1387	.865	1489	.981	1587	1.10
	2000	2392	499	360	986	.574	1096	.674	1204	.782	1308	.896	1407	1.01	1503	1.12	1596	1.26
	2200	2632	549	396	1042	.721	1143	.826	1243	.941	1340	1.06	1434	1.19	1525	1.31	1613	1.45
CPE 300	2400	2124	404	288	649	.551	740	.671	824	.790	910	.919	980	1.04	1059	1.20	1125	1.30
	2700	2389	455	324	688	.718	767	.853	856	1.00	927	1.13	1002	1.30	1067	1.44	1138	1.58
	3000	2655	505	360	721	.899	802	1.06	877	1.21	948	1.37	1014	1.51	1083	1.66	1141	1.81
	3300	2920	556	396	761	1.18	840	1.34	909	1.51	977	1.69	1067	1.87	1112	2.03	1168	2.21
CPE 400	3200	2013	400	329	520	.654	600	.813	672	.974	746	1.23	807	1.32	870	1.53	—	—
	3600	2264	450	370	544	.837	619	1.02	688	1.19	758	1.45	814	1.56	878	1.84	931	1.96
	4000	2516	500	412	569	1.05	641	1.25	707	1.45	771	1.68	826	1.85	882	2.09	937	2.27
	4400	2767	550	453	596	1.31	665	1.53	728	1.75	792	1.97	842	2.19	898	2.43	947	2.63

BHP Brake Horse Power, Drive Losses Included

Air Resistance Table Inches of Water Gauge

Model CPE 80 Thru 400	Coil Face Velocity FPM			
COMPONENT	400	450	500	550
HORIZONTAL CASING	.037	.055	.086	.105
VERTICAL CASING	.042	.060	.091	.110
COIL ROWS 2 DRY	.109	.130	.153	.177
COIL ROWS 4 DRY	.221	.265	.312	.361
COIL ROWS 4 WET	.266	.317	.367	.429
COIL ROWS 6 DRY	.334	.401	.471	.545
COIL ROWS 6 WET	.397	.473	.543	.640
COIL ROWS 8 DRY	.447	.537	.631	.751
COIL ROWS 8 WET	.528	.629	.720	.851
THROWAWAY FILTERS 2"	.075	.102	.125	.150

Fan, Coil and Filter Data

MODEL CPE	80	100	150	200	300	400	
NOMINAL CFM	800	1000	1500	2000	3000	4000	
COIL FACE AREA FT ²	1.69	2.03	3.03	4.01	5.94	7.99	
COIL SIZE TF x FL	10 x 19-1/2	12 x 19-1/2	14 x 25	14 x 33	18 x 38	20 x 46	
FAN WHEEL DIAMETER	9"	9"	9"	9"	12"	15"	
MAXIMUM RPM	1540	1550	1590	1610	1160	950	
MAXIMUM MOTOR H.P.	3/4	3/4	1	1-1/2	2	3	
FILTERS	QTY.	1	1	2	2	3	1 & 2
	SIZE	16 x 25	16 x 25	16 x 20	20 x 20	16 x 25	16 x 25 and 20 x 25
FILTER GROSS AREA FT ²	2.78	2.78	4.44	5.56	8.33	9.72	

Cooling Coil Performance Table

Unit Model	Nom. CFM	Chilled Water			Coil Rows Deep	Water Side Head Loss'	No. Feeds	Entering Air 78°F / 65°F				Chilled Water			Water Side Head Loss'	Entering Air 80°F / 67°F				
		Ent. Temp. °F	Leaving Temp. °F	GPM				Leaving Air Temp. °F		Capacity		Leaving Temp. °F	GPM	No. Feeds		Leaving Air Temp. °F		Capacity		
								DB	WB	Total BTUH	Sens. BTUH					DB	WB	Total BTUH	Sens. BTUH	
																				DB
CPE 80	800	42	8	50.0	5.9	4	3.05	5	57.3	55.0	23664	17582	50.0	6.9	5	4.01	57.6	55.6	27583	18993
				50.3	7.5	6	5.27	5	52.2	51.4	31050	21940	50.3	8.5	5	6.54	52.5	51.9	35195	23266
				50.1	8.8	8	7.80	5	49.1	49.0	35594	24543	50.3	9.7	5	9.23	49.3	49.3	40147	26002
		45	8	52.6	5.0	4	2.27	5	59.5	57.2	18964	15771	53.1	5.8	5	2.93	59.9	57.5	23358	17016
				53.2	6.5	6	4.07	5	54.6	53.6	26681	19939	53.2	7.5	5	5.21	55.0	54.1	30760	21224
				53.4	7.3	8	5.58	5	51.8	51.5	30778	22291	53.4	8.4	5	7.12	52.1	51.9	35185	23672
	42	10	51.7	3.9	4	1.49	5	59.7	57.2	18970	15598	52.1	4.8	5	2.13	59.4	57.2	24144	17426	
			51.9	6.0	6	3.57	5	53.0	52.0	29845	21257	52.0	6.8	5	4.43	53.4	52.6	33937	22567	
			52.2	6.8	8	4.97	5	49.8	49.5	34597	23968	52.1	7.7	5	6.16	50.2	50.1	38846	25278	
	45	10	55.5	2.5	4	0.68	5	63.5	59.7	13132	12309	55.2	3.0	5	0.94	64.1	61.1	15287	13515	
			54.7	5.0	6	2.58	5	55.7	54.7	24206	18986	55.3	5.5	5	3.03	56.2	55.3	28401	20198	
			55.0	5.8	8	3.73	5	52.6	52.3	29122	21607	55.1	6.8	5	4.92	52.6	52.3	34348	23215	
CPE 100	1000	42	8	50.3	7.4	4	6.84	4	56.5	54.5	30805	22832	50.5	8.3	4	8.35	57.2	55.4	35078	24187
				50.3	9.3	6	6.25	6	52.4	51.6	38376	27266	50.2	10.6	6	6.10	52.7	52.1	43577	28940
				50.5	10.4	8	6.72	6	49.3	49.2	44006	30513	50.3	11.9	6	8.50	49.5	49.5	49684	32290
		45	8	53.4	6.1	4	4.84	4	58.7	56.5	25466	20529	53.4	7.2	4	6.46	59.2	57.1	30283	22012
				53.3	8.2	6	9.73	4	54.2	53.3	33955	25346	53.3	9.2	6	6.07	55.1	54.3	37943	26364
				53.2	9.3	8	6.86	6	51.8	51.6	38314	27880	53.3	10.5	6	6.77	52.2	52.1	43462	29412
	42	10	52.3	5.9	4	7.90	3	56.8	54.7	30255	22505	52.0	6.7	4	5.74	58.0	56.0	33526	23314	
			52.3	7.4	6	8.19	4	52.5	51.7	38024	27071	52.2	8.5	4	10.43	52.9	52.2	43207	28728	
			52.2	8.4	8	5.79	6	49.9	49.7	42857	29840	52.1	9.5	6	7.17	50.3	50.2	48169	31467	
	45	10	55.0	4.9	4	5.67	3	58.9	56.8	24524	20274	55.3	5.8	3	7.59	59.5	57.3	29780	21721	
			55.1	6.3	6	6.14	4	54.9	54.1	31914	24551	55.4	7.3	4	7.92	55.2	54.3	37847	26296	
			55.3	7.3	8	9.25	4	52.1	52.0	37433	27568	55.3	8.4	4	11.80	52.3	52.2	43417	29389	
CPE 150	1500	42	8	50.1	10.9	4	4.93	7	57.4	55.1	44005	32845	50.0	12.6	7	6.34	58.0	55.9	50511	34991
				50.3	13.8	6	8.74	7	52.5	51.6	57218	40610	49.7	15.8	14	3.08	54.2	53.2	61085	40955
				50.0	15.8	8	3.33	14	50.5	50.1	62860	43893	50.0	17.8	14	4.10	50.6	50.4	71368	46670
		45	8	53.0	9.1	4	4.91	7	59.4	57.0	36464	29740	53.1	10.7	7	4.75	60.0	57.6	43342	31719
				53.3	11.9	6	6.69	7	54.8	53.7	49287	36971	53.3	13.7	7	8.54	55.3	54.4	56583	39264
				53.3	13.8	8	9.96	7	52.0	51.7	57114	41523	53.0	15.6	14	4.49	53.3	52.9	62342	42463
	42	10	51.6	8.7	4	4.58	7	58.2	55.6	41926	31636	51.6	10.0	7	5.83	58.8	56.5	48140	33651	
			52.1	11.0	6	5.88	7	53.1	52.1	55622	39698	52.0	12.6	7	7.44	53.6	52.7	62749	41872	
			52.2	12.6	8	8.56	7	50.1	49.8	64036	44531	51.7	14.0	14	3.75	51.8	51.4	67966	44777	
	45	10	54.5	6.5	4	2.73	7	60.9	58.3	30731	27231	54.8	8.0	7	3.92	61.1	58.7	39342	30128	
			54.9	9.4	6	5.85	7	55.5	54.5	46410	35905	55.0	11.0	7	5.82	55.9	54.8	55007	38374	
			55.1	10.8	8	6.48	7	52.7	52.4	54579	40391	55.2	12.5	7	8.36	52.9	52.6	63427	43063	
CPE 200	2000	42	8	50.4	14.3	4	8.70	7	57.0	54.8	59930	44586	50.5	16.0	7	9.26	57.8	55.8	67867	47012
				49.5	20.0	6	4.98	14	52.9	51.9	74941	53408	49.7	22.0	14	5.87	53.4	52.6	84662	56435
				50.5	20.0	8	5.45	14	50.2	49.9	84924	59162	49.8	25.0	14	5.59	50.1	50.0	97270	63382
		45	8	53.2	12.3	4	6.64	7	59.0	56.5	50715	40335	53.3	14.3	7	8.63	59.7	57.5	59107	43095
				52.8	15.8	6	3.27	14	55.7	54.5	61737	47524	52.9	18.5	14	4.30	55.9	54.8	73226	51146
				53.1	18.3	8	4.61	14	52.4	52.0	74189	54344	53.1	21.0	14	5.88	52.8	52.5	84681	57518
	42	10	51.9	11.6	4	6.04	7	57.8	55.4	57390	43043	52.3	12.7	7	7.02	58.6	56.4	65081	45433	
			51.3	15.0	6	4.20	14	54.2	52.9	69995	50586	51.5	17.0	14	3.74	54.3	53.3	80925	54368	
			51.8	17.0	8	4.09	14	50.7	50.3	82799	57957	51.9	19.0	14	4.98	50.9	50.7	93959	61584	
	45	10	54.6	9.8	4	5.99	7	59.6	57.3	46791	39122	54.9	11.4	7	5.80	60.4	57.9	56310	41495	
			55.0	12.7	6	8.45	7	55.1	54.1	63568	48691	54.3	14.8	14	4.06	56.9	55.7	68547	49022	
			54.5	14.6	8	4.25	14	53.4	53.0	69332	52240	54.8	16.8	14	3.98	53.6	53.2	81913	56016	
CPE 300	3000	42	8	50.3	21.7	4	11.68	9	56.9	54.8	90488	67357	49.8	25.1	18	2.99	58.6	56.4	97430	68136
				49.9	28.2	6	4.31	18	52.9	51.9	112046	79989	50.0	31.8	18	5.31	53.3	52.5	127064	84770
				50.1	31.7	8	6.07	18	49.9	49.7	129019	89769	50.1	35.9	18	7.54	50.1	50.0	145685	95031
		45	8	53.3	18.5	4	8.76	9	58.9	56.5	76338	60811	53.2	21.8	9	11.65	59.5	57.4	89349	65220
				53.1	23.7	6	3.15	18	55.2	54.1	96077	72747	53.0	27.8	18	4.16	55.7	54.7	110674	77303
				53.2	27.2	8	4.61	18	52.3	52.0	111787	81854	53.1	31.4	18	5.91	52.7	52.5	127732	86784
	42	10	52.0	17.4	4	7.93	9	57.6	55.3	86705	65111	51.9	20.0	9	10.10	58.2	56.1	99384	69247	
			51.6	22.5	6	2.91	18	53.6	52.5	107925	77689	51.7	25.4	18	3.58	54.0	53.1	123173	82638	
			51.9	25.4	8	4.12	18	50.4	50.1	126048	88083	51.9	28.7	18	5.10	50.7	50.5	141896	92965	
	45	10	54.6	14.8	4	7.11	9	59.4	57.1	71357	59239	54.8	17.5	9	7.93	60.2	57.8	85744	63090	
			55.1	19.0	6	11.30	9	55.1	54.1	95466	73083	54.6	22.2	18	2.81	56.3	55.2	107013	75307	
			54.7	21.8	8	5.08	18	53.1	52.7	106010	79373	54.9	25.1	18	4.00	53.3	53.0	124375	84956	
CPE 400	4000	42	8	49.8	29.8	4	3.69	20	57.5	55.2	116280	87114	49.9	33.8	20	4.59	58.2	56.1	133098	92568
				50.1	37.5	6	6.55	20	52.6	51.7	151636	107890	50.0	43.1	20	8.35	53.0	52.3	172163	114484
				50.2	42.7	8	9.55	20	49.5	49.3	174476	120974	50.1	48.4	20	11.87	49.8	49.8	196613	127959
		45	8	52.6	25.2	4	2.73	20	59.5	57.0	96355	78694	52.8	29.3	20	3.54	60.1	57.7	114557	84163
				53.1	32.0	6	4.93	20	54.9	53.8	130238	98055	53.0	37.5	20	6.49	55.4	54.5	150138	104439
				53.2	37.0	8	7.37	20	52.1	51.8	151271	110282	53.2	42.3	20	9.30	52.4	52.2	172501	116800
	42	10	52.0	23.8	4	10.61	10	57.2	55.0	118555	88474	51.4	27.0	20	3.10	59.0	56.6	127052	89090	
			51.8	30.0	6	4.44	20	53.2	52.2	147327	105428	51.7	34.5	20	5.66	53.7	52.8	166592	111380	
			51.9	34.2	8	6.47	20	50.2	49.9	169918	118397	51.9	38.7	20	8.02	50.5	50.3	191145	124928	
	45	10	54.7	20.2	4	9.62	10	59.1	56.8	98384	80319	54.2	23.0	20	2.32	61.0	58.5	105876	80541	
			54.6	25.6	6	3.34</														

Refrigerant 22 Coil Performance Table

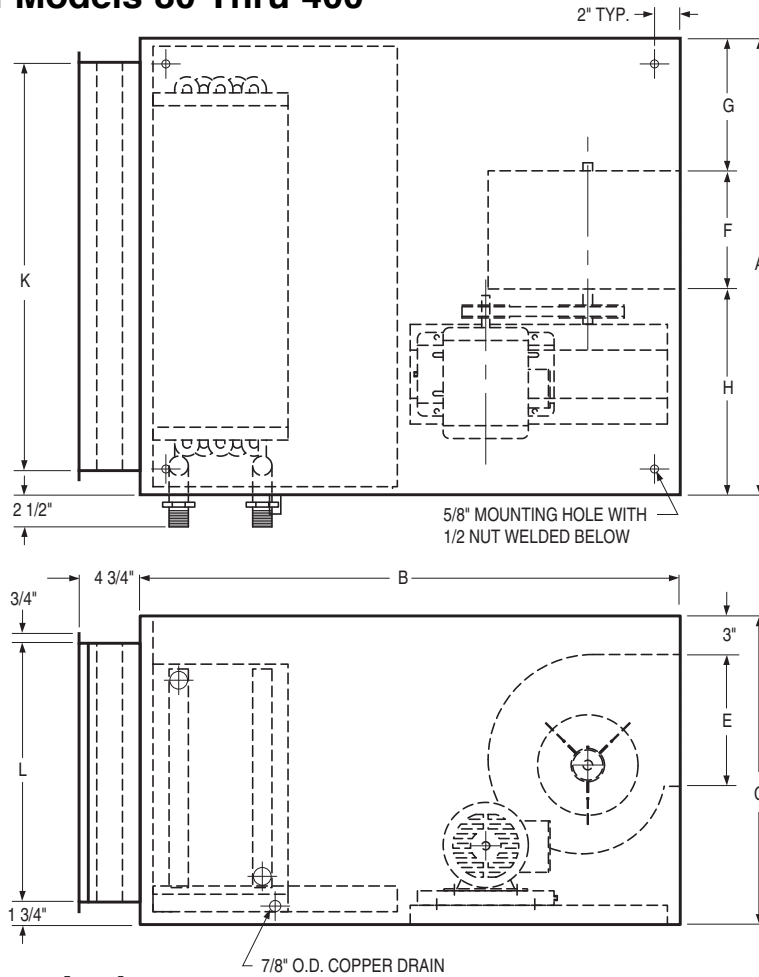
Unit Model	Nom. CFM	Refrig Temp. °F	Coil Rows Deep	Entering Air 78°F / 65°F				Entering Air 80°F / 67°F				
				Leaving Air Temperature °F		Capacity		Leaving Air Temperature °F		Capacity		
				DB	WB	Total BTUH	Sens. BTUH	DB	WB	Total BTUH	Sens. BTUH	
CPE 80	800	40	4	55.8	53.7	26336	18889	56.3	54.5	29971	20103	
			6	51.4	50.5	32662	22595	51.6	51.0	37008	24039	
			8	48.4	48.2	37117	25158	48.4	48.4	41897	26741	
			45	4	59.4	56.8	19896	15838	60.0	57.6	23295	16984
				6	55.2	54.0	25818	19412	55.5	54.5	29932	20782
				8	52.9	52.3	29077	21321	53.0	52.6	33764	22900
CPE 100	1000	40	4	56.1	54.0	32138	23237	56.8	54.9	36411	24631	
			6	51.3	50.5	40889	28381	51.7	51.1	46027	30016	
			8	48.7	48.5	45689	31131	48.8	48.8	51570	33068	
		45	4	59.6	57.0	24316	19585	59.9	57.6	28979	21270	
			6	55.6	54.3	31333	23814	55.8	54.8	36700	25667	
			8	52.9	52.4	36291	26710	53.0	52.7	41879	28551	
CPE 150	1500	40	4	56.2	54.1	48266	34844	57.0	55.0	53952	36492	
			6	51.6	50.7	60625	42076	52.0	51.3	68310	44524	
			8	48.6	48.4	68919	46812	48.9	48.8	76959	49321	
		45	4	59.9	57.0	36266	29141	60.2	57.8	42756	31402	
			6	55.7	54.4	46863	35566	55.9	54.8	54823	38278	
			8	53.0	52.4	54156	39833	53.3	52.9	62294	42455	
CPE 200	2000	40	4	56.1	54.0	64458	46563	56.8	54.9	72566	49094	
			6	51.3	50.5	81953	56795	51.9	51.2	91010	59417	
			8	48.7	48.5	91591	62331	48.7	48.7	103326	66186	
		45	4	59.5	56.9	49192	39432	60.2	57.8	57166	42003	
			6	55.4	54.2	63344	47983	55.6	54.6	73981	51665	
			8	52.8	52.3	73006	53627	53.0	52.7	84031	57161	
CPE 300	3000	40	4	56.1	54.0	96542	69851	56.8	54.9	108845	73724	
			6	51.3	50.5	122463	85012	51.7	51.1	138104	90060	
			8	48.5	48.3	138376	94124	48.6	48.6	155738	99758	
		45	4	59.4	56.8	73884	59291	59.9	57.6	87259	63984	
			6	55.4	54.2	94903	72061	55.6	54.7	111205	77642	
			8	52.8	52.3	108971	80254	53.1	52.8	125513	85590	
CPE 400	4000	40	4	55.9	53.9	130092	93903	56.5	54.7	147957	99769	
			6	51.0	50.3	165794	114783	51.4	50.9	186219	121133	
			8	48.3	48.2	185892	126206	48.4	48.4	209022	133689	
		45	4	59.1	56.6	100835	80377	59.8	57.5	117062	85683	
			6	55.2	54.0	128223	96939	55.4	54.5	150071	104406	
			8	52.5	52.1	147924	108445	52.8	52.5	169292	115073	

Hot Water and Steam Heating Table

Unit Model	Nom. CFM	Hot Water			Coil Rows Deep	Water Side Head Loss'	No. Feeds	Entering Air 70°F D.B.			
		Ent. Temp. °F	Leaving Temp. °F	GPM				Leaving Air °F	Cap. BTUH	5 psig Steam	
										Leaving Air °F	Cap. BTUH
CPE 80	800	180	164.5	5	2	5.90	2	113.9	37836	139.5	59849
CPE 100	1000	180	164.5	6.5	2	4.83	3	115.7	49279	138.4	73669
CPE 150	1500	180	165.2	10	2	3.57	7	114.7	72310	139.8	112893
CPE 200	2000	180	163.6	12	2	3.56	7	114.5	95953	141.4	153865
CPE 300	3000	180	163.6	18	2	4.51	9	114.7	144592	141.7	231754
CPE 400	4000	180	163.9	25	2	5.64	10	115.6	196631	142.4	312006

For conditions other than listed in the tables, contact your nearest representative for a computer printout for specific capacities to satisfy job conditions.

Single Wall, Dimensional Drawing, Coil Connection Sizes, Shipping Weights Horizontal Models 80 Thru 400



Note: Standard right hand unit as shown. Left hand unit on special order only.

Dimensions - Inches

Model	A	B	C	E	F	G	H	K	L
CPE 80	32	42	21 1/2	10 1/4	6 13/16	9 3/16	14	24 7/8	16 1/8
CPE 100	32	42	21 1/2	10 1/4	6 13/16	9 3/16	14	24 7/8	16 1/8
CPE 150	35 1/2	42	24	10 1/4	9 3/16	12 5/16	14	31 3/4	20 1/8
CPE 200	43 1/2	42	24	10 1/4	11 13/16	15 13/16	15 13/16	39 3/4	20 1/8
CPE 300	50	46 1/2	29	13 7/16	12 1/4	18 7/8	18 7/8	47 5/8	25 1/8
CPE 400	58	49 3/4	31 1/2	15 7/8	14 11/16	21 5/8	21 5/8	55 5/8	25 1/8

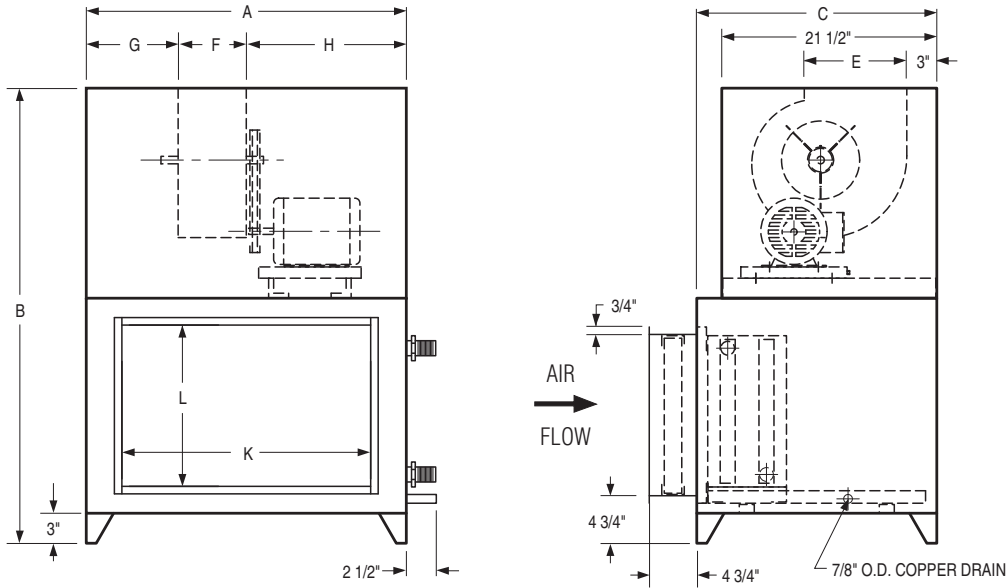
Coil Connection Sizes and Shipping Weights

Model CPE		80	100	150	200	300	400
REFRIG. — 22 COIL 4, 6 AND 8 ROWS O.D. SWEAT CONN	* LIQUID	1/2"	1/2"	1/2"	1/2"	5/8"	5/8"
	SUCTION	7/8"	1 1/8"	1 1/8"	1 3/8"	1 3/8"	1 5/8"
WATER COIL CONNECTION SUPPLY & RETURN MALE PIPE THREAD	2 ROWS	1"	1"	1"	1"	1 1/4"	1 1/4"
	4 ROWS	1"	1"	1"	1 1/4"	1 1/4"	1 1/2"
	6 ROWS	1"	1"	1 1/4"	1 1/4"	1 1/2"	1 1/2"
	8 ROWS	1"	1"	1 1/4"	1 1/4"	1 1/2"	1 1/2"
APPROXIMATE SHIPPING WEIGHT (LBS.)	2 ROW COIL	15.8	16.5	22.2	27.5	38.8	49.4
	4 ROW COIL	25.8	28.3	39.8	49.7	68.7	90.0
	6 ROW COIL	35.0	38.7	55.3	69.7	98.6	127.8
	8 ROW COIL	44.0	50.3	71.0	89.7	127.5	165.9
COMPLETE CASING	HORIZONTAL	157.8	157.8	177.1	187.0	264.8	316.4
	VERTICAL	164.9	164.9	182.8	200.0	281.2	332.3

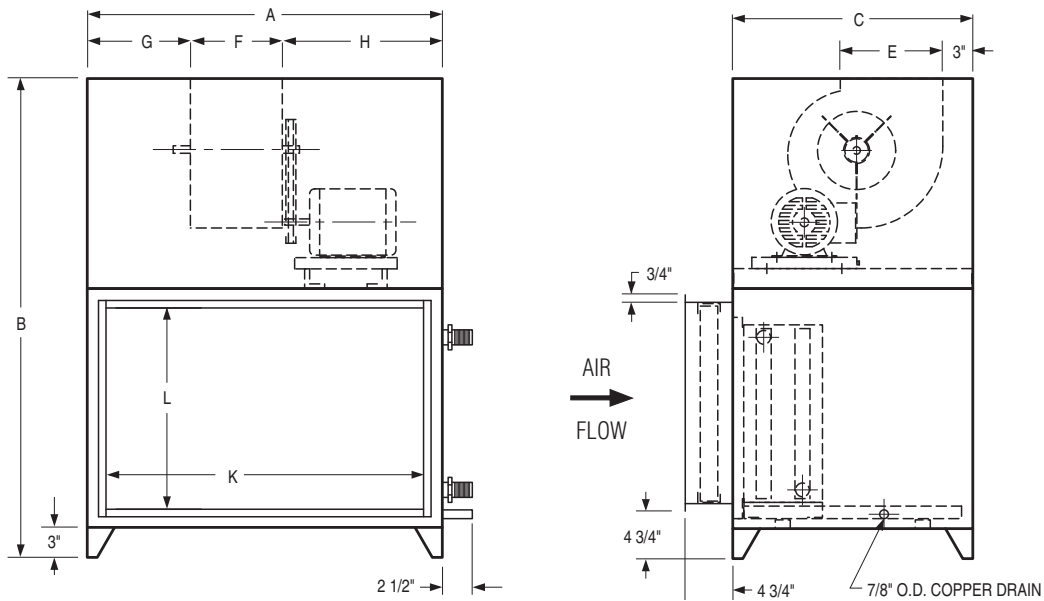
* Thermostatic expansion valve inlet size.

Single Wall, Dimensional Drawing and General Notes Vertical Models 80 Thru 400

Models 80 Thru 100



Models 150 Thru 400

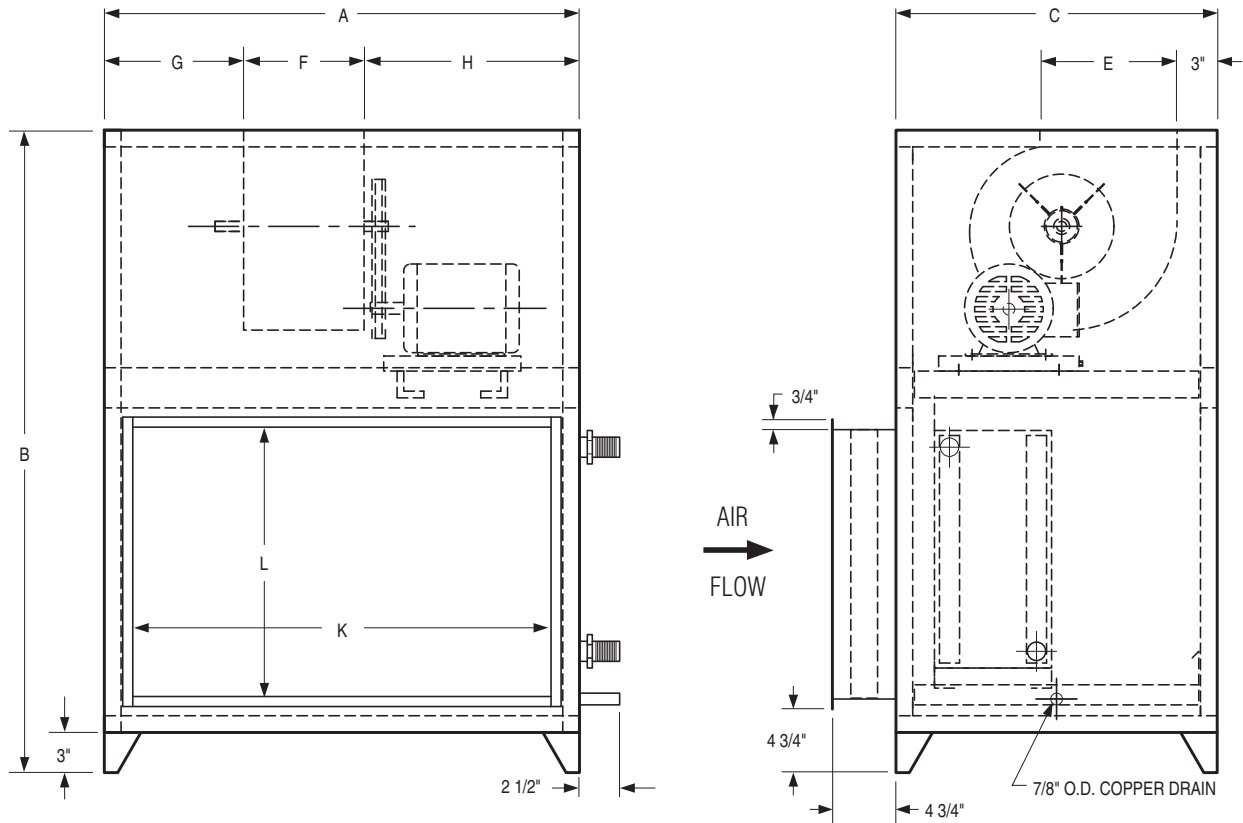


Note: Standard right hand unit as shown. Left hand unit on special order only.

Dimensions - Inches

Model	A	B	C	E	F	G	H	K	L
CPE 80	32	45 1/2	24	10 1/4	6 13/16	9 3/16	16	24 7/8	16 1/8
CPE 100	32	45 1/2	24	10 1/4	6 13/16	9 3/16	16	24 7/8	16 1/8
CPE 150	35 1/2	48	24	10 1/4	9 3/16	12 5/16	14	31 3/4	20 1/8
CPE 200	43 1/2	48	24	10 1/4	11 13/16	15 27/32	15 27/32	39 3/4	20 1/8
CPE 300	50	57 1/2	29	13 7/16	12 7/16	18 9/16	19	47 5/8	25 1/8
CPE 400	58	63 1/4	29	15 7/8	14 7/8	21 9/16	21 9/16	55 5/8	25 1/8

Double Wall, Dimensional Drawing and General Notes
Vertical Models 80 Thru 400



Note: Standard right hand unit as shown. Left hand unit on special order only.

Dimensions - Inches

Model	A	B	C	E	F	G	H	K	L
CPE 80	32	45 1/2	24	10 1/4	7	9	16	24 7/8	16 1/8
CPE 100	32	45 1/2	24	10 1/4	7	9	16	24 7/8	16 1/8
CPE 150	35 1/2	48	24	10 1/4	9 3/16	10 5/16	16	31 1/4	20 1/8
CPE 200	43 1/2	48	24	10 1/4	11 13/16	15 27/32	15 27/32	39 3/4	20 1/8
CPE 300	50	57 1/2	29	13 7/16	12 7/16	18 9/16	19	47 5/8	25 1/8
CPE 400	58	63 1/4	31	15 7/8	14 7/8	21 9/16	21 9/16	55 5/8	25 1/8

General Notes

Air Friction Loss:

Calculate losses from air resistance table for equipment selected. Add external losses such as duct work for total static pressure. To establish fan R.P.M. and fan motor H.P. refer to the fan performance table.

Winter Heating:

Add 10% to the fan brake horse power to compensate for fan motor located in the heated air stream.

Construction:

Standard CPE units are of one-piece construction and must be shipped completely assembled, motor included.

Weights:

Complete casing weight includes casing, filter rack, fan, motor and drive.



4714 Winfield Road Houston, TX 77039

Tel: 281-590-1172 • 281-897-9000

Fax: 281-897-9007

www.thermal-corp.com

9-9-11